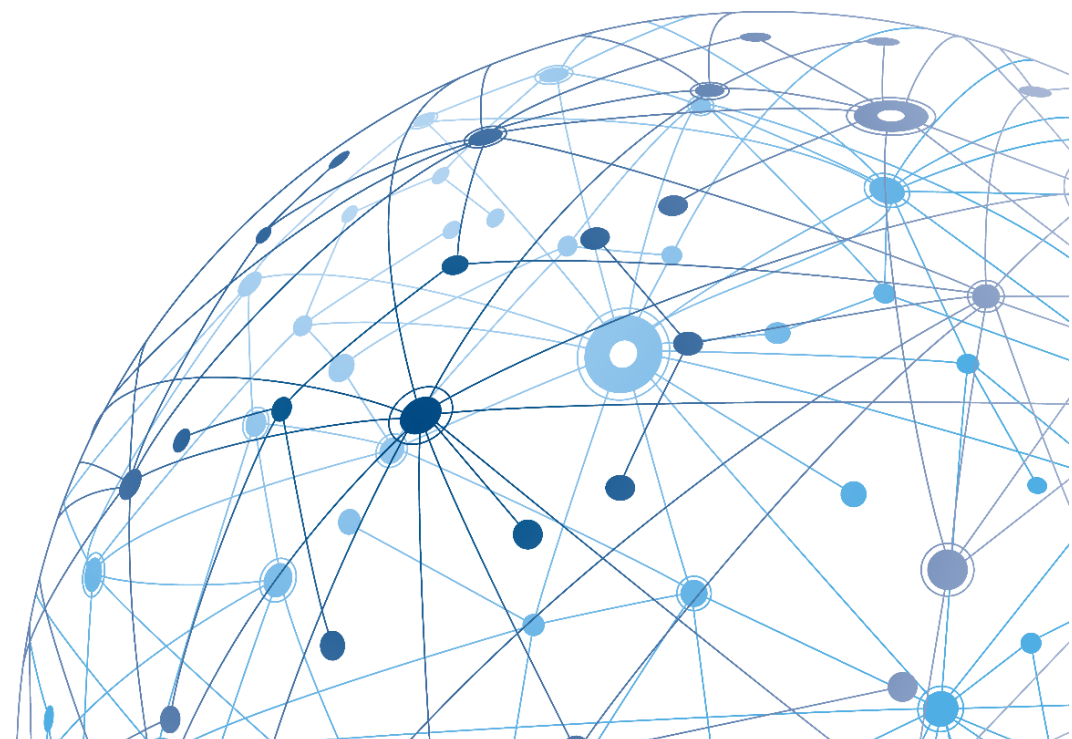


Sibelco and Natura 2000

Example of Sibelco's quarries in Maasmechelen

Presented by Mark Stulens

Material solutions advancing life



People



People

Positive / constructive attitude

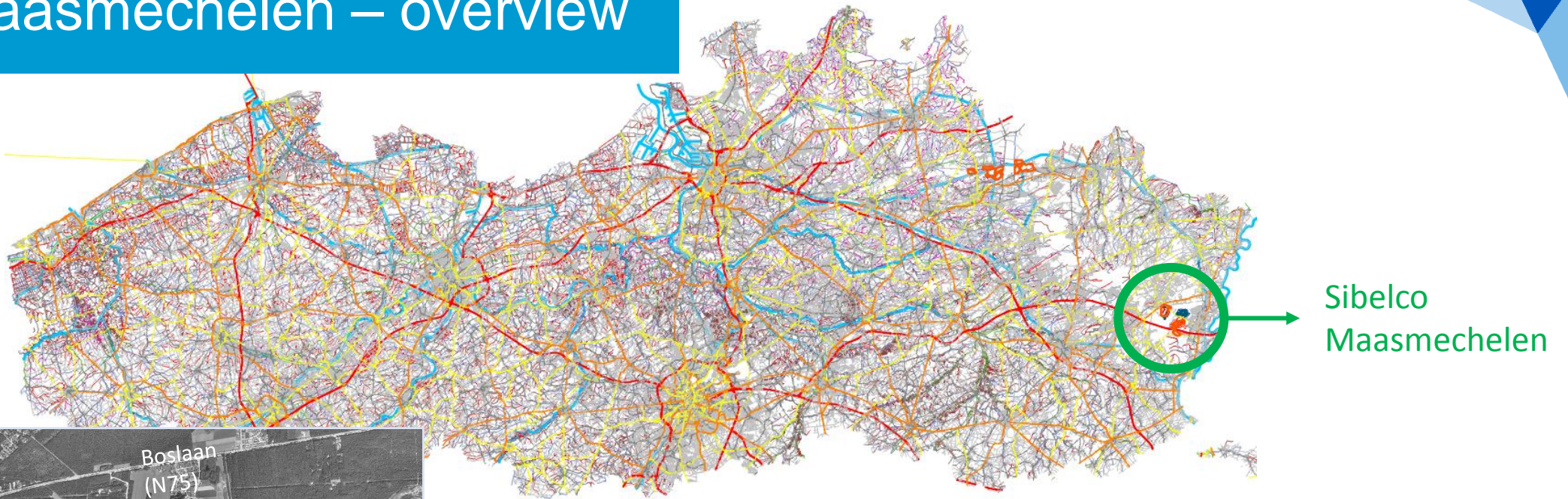


People

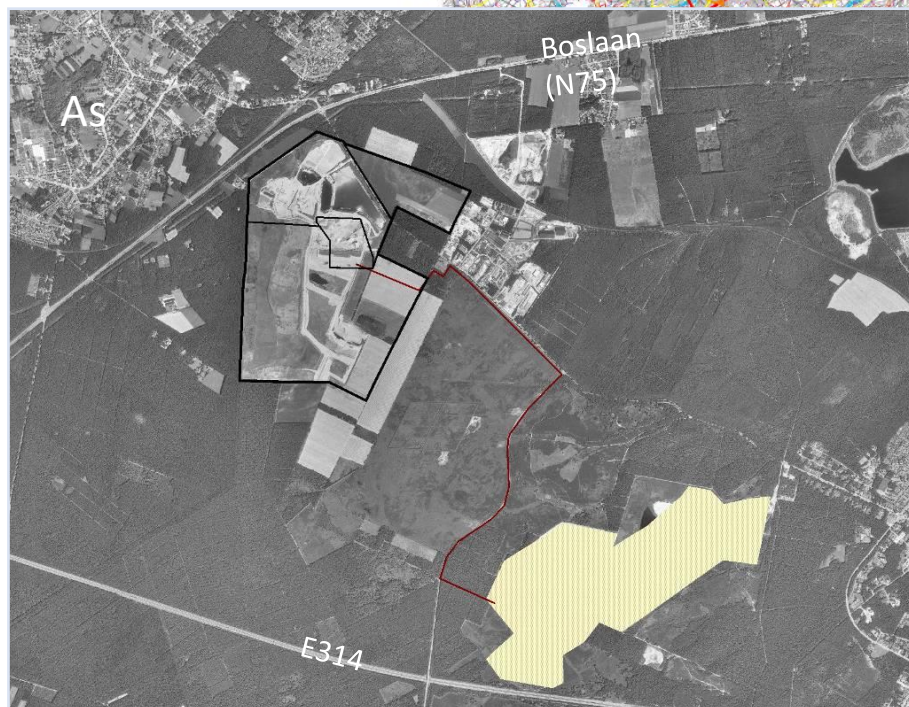
Long term continuity



Sibelco Maasmechelen – overview



Sibelco
Maasmechelen



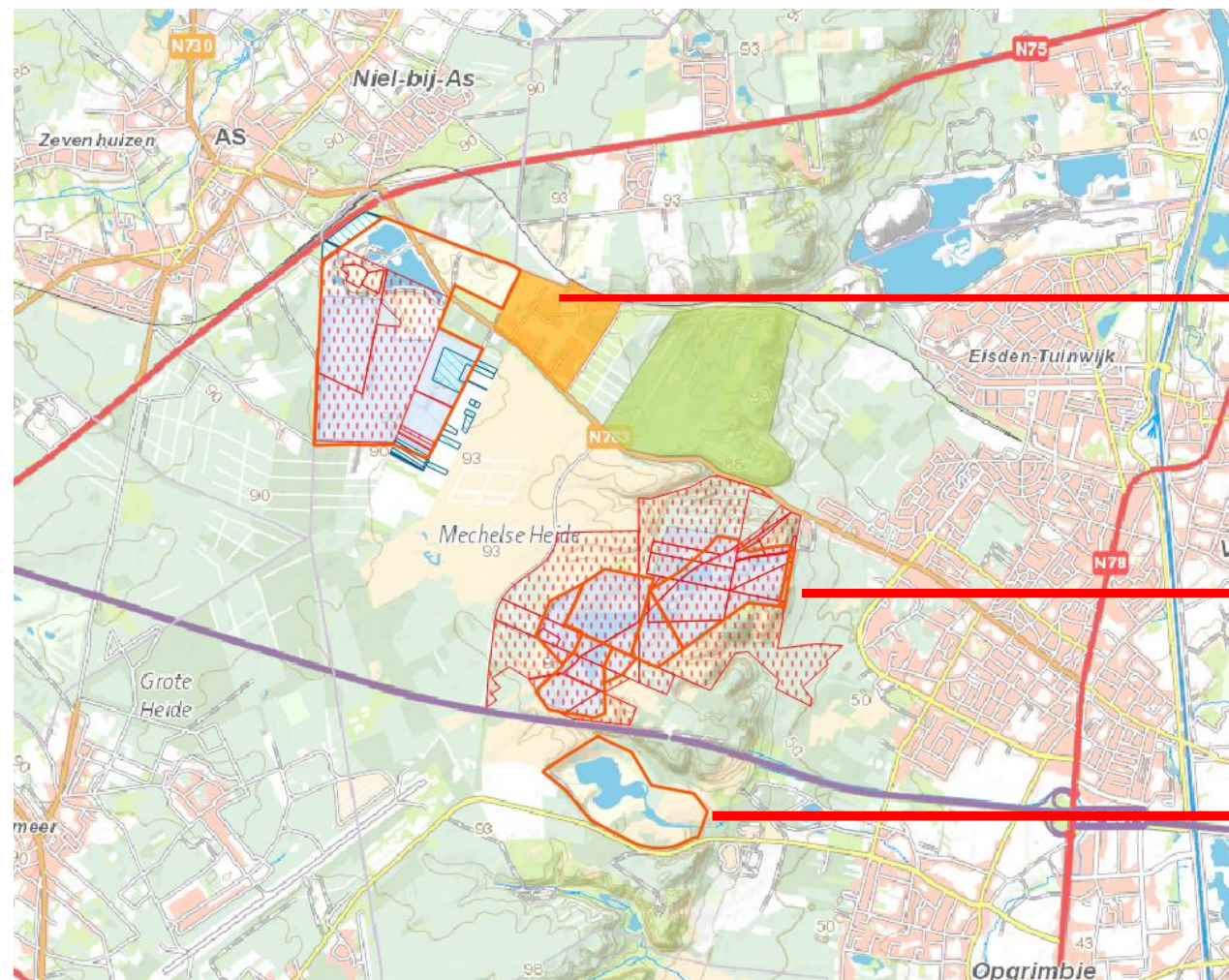
Sibelco for over 50 years active in the region
→ mineral extraction of high quality low iron sand

2 quarries in and near Natura 2000 and 1 restored quarry

Sibelco Maasmechelen - overview

Operations:

- Quarry MHZ: near N2000
- Quarry Berg: in N2000 (over 50 years old)
- Former quarry OPL: restored in 2005 (Nature area Kikbeekbron)

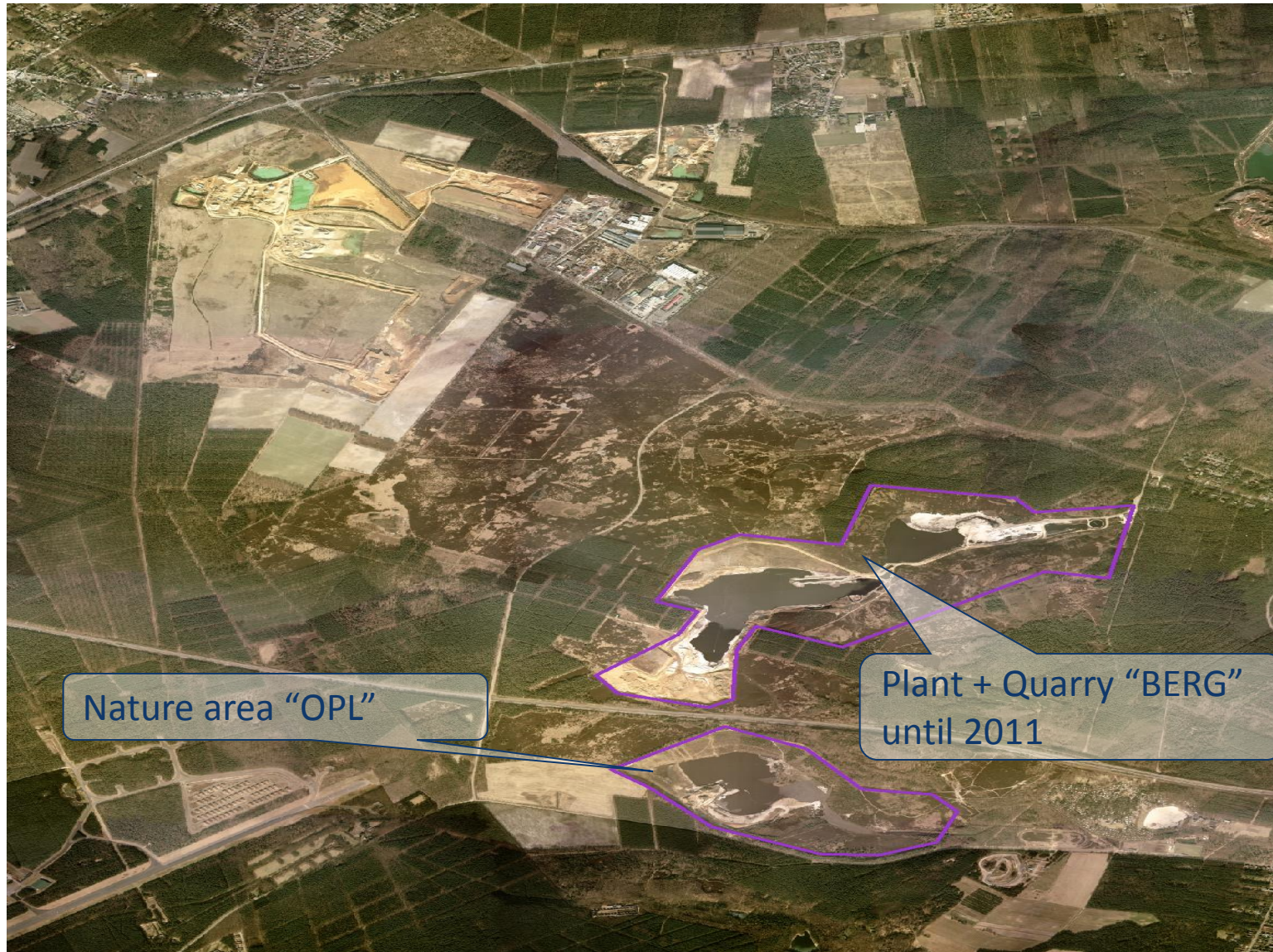


Quarry MHZ:
Mechelse Heide Zuid

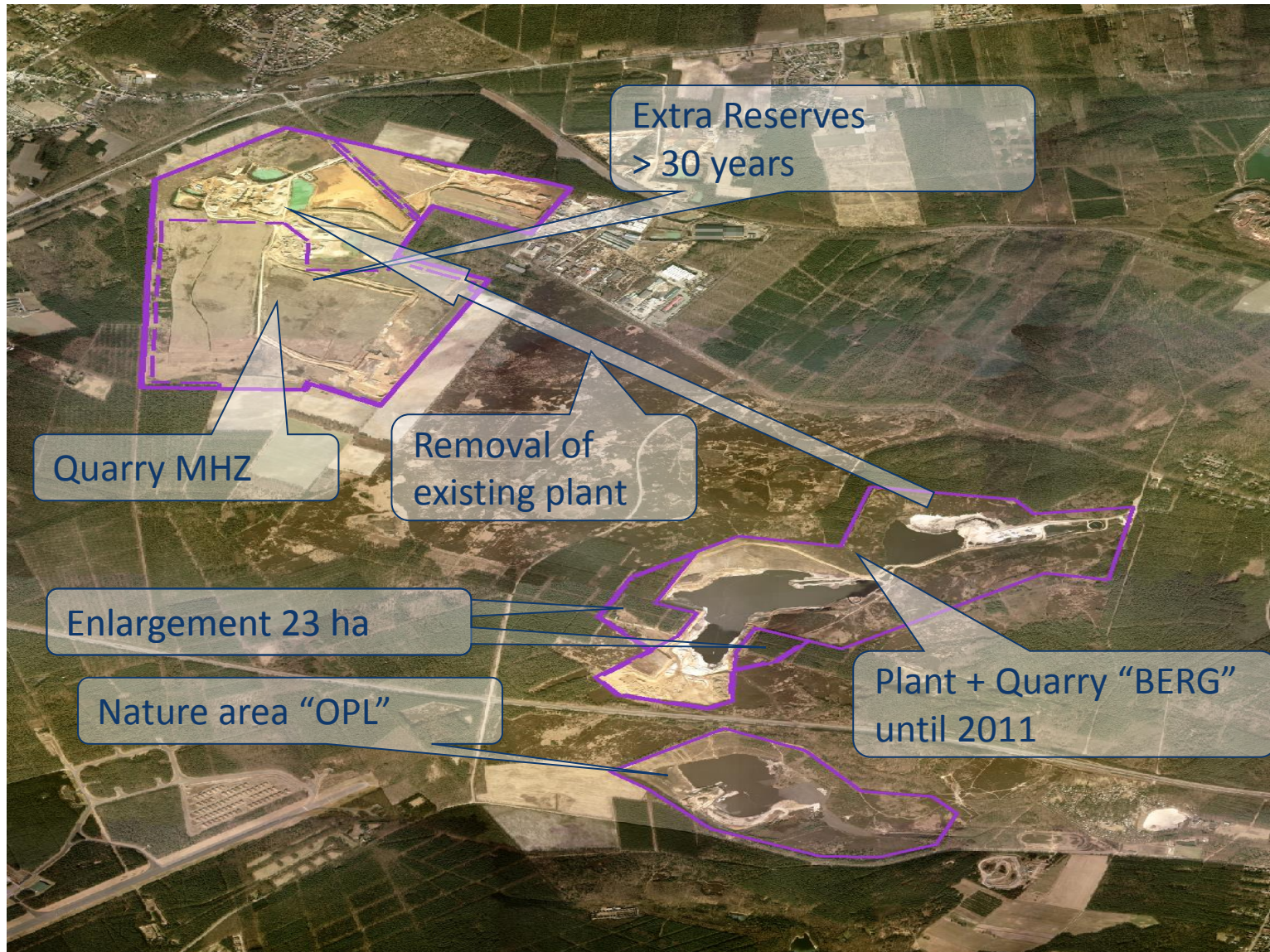
Quarry Berg

Former quarry
Opgrimbie (OPL)

History - situation 1999

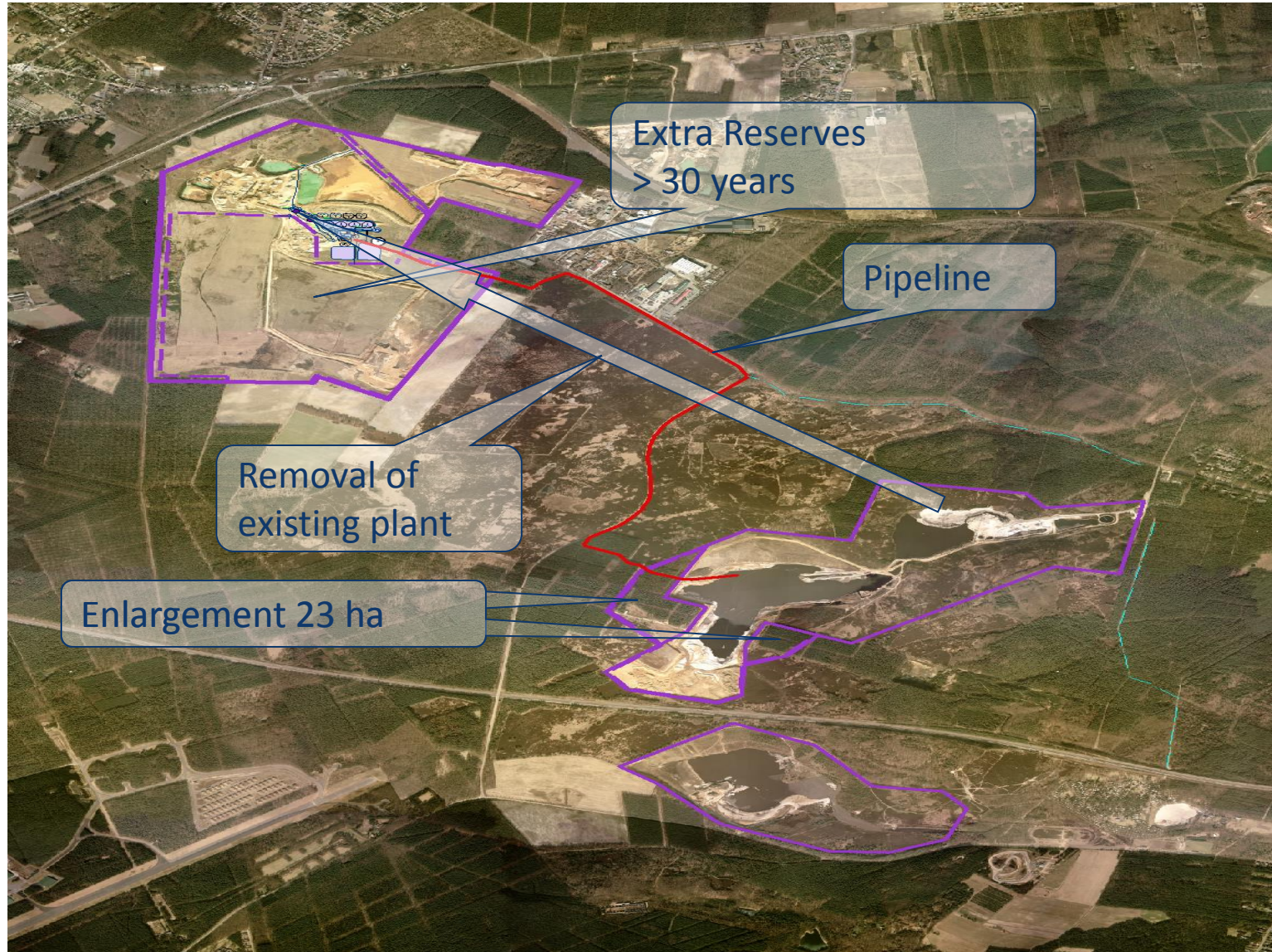


Protocol 2000 – negotiated outcome

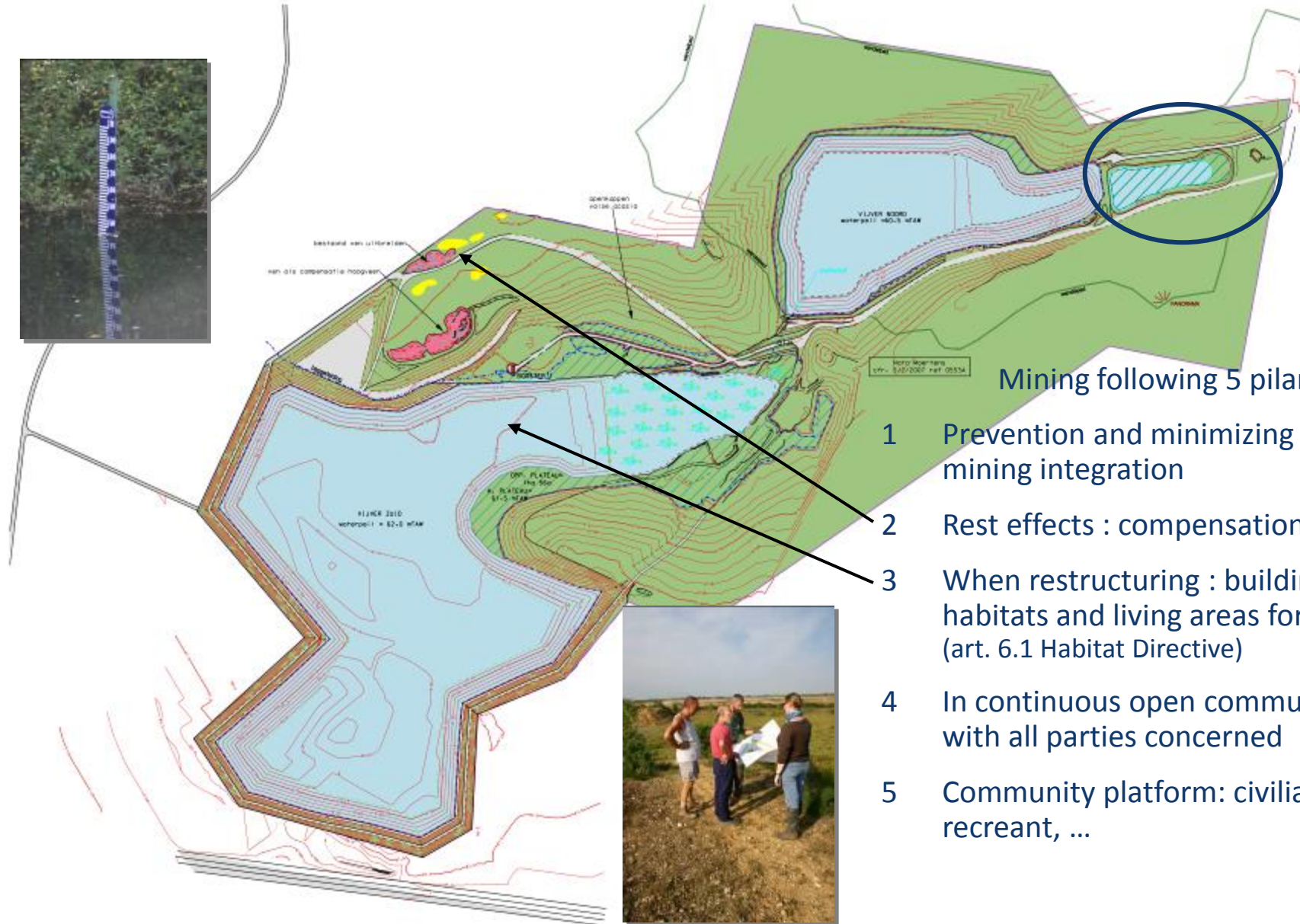


- 2000 Sibelco, Flemish Government and stakeholders sign a protocol with several engagements :
 - Sibelco committed the removal of the Berg plant to MHZ asap
- 2001 Flemish Government approved planning initiatives :
 - extension at the Berg quarry (23ha)
 - new quarry MHZ (270ha)

Protocol 2000 – negotiated outcome



Maasmechelen: Example Quarry Berg



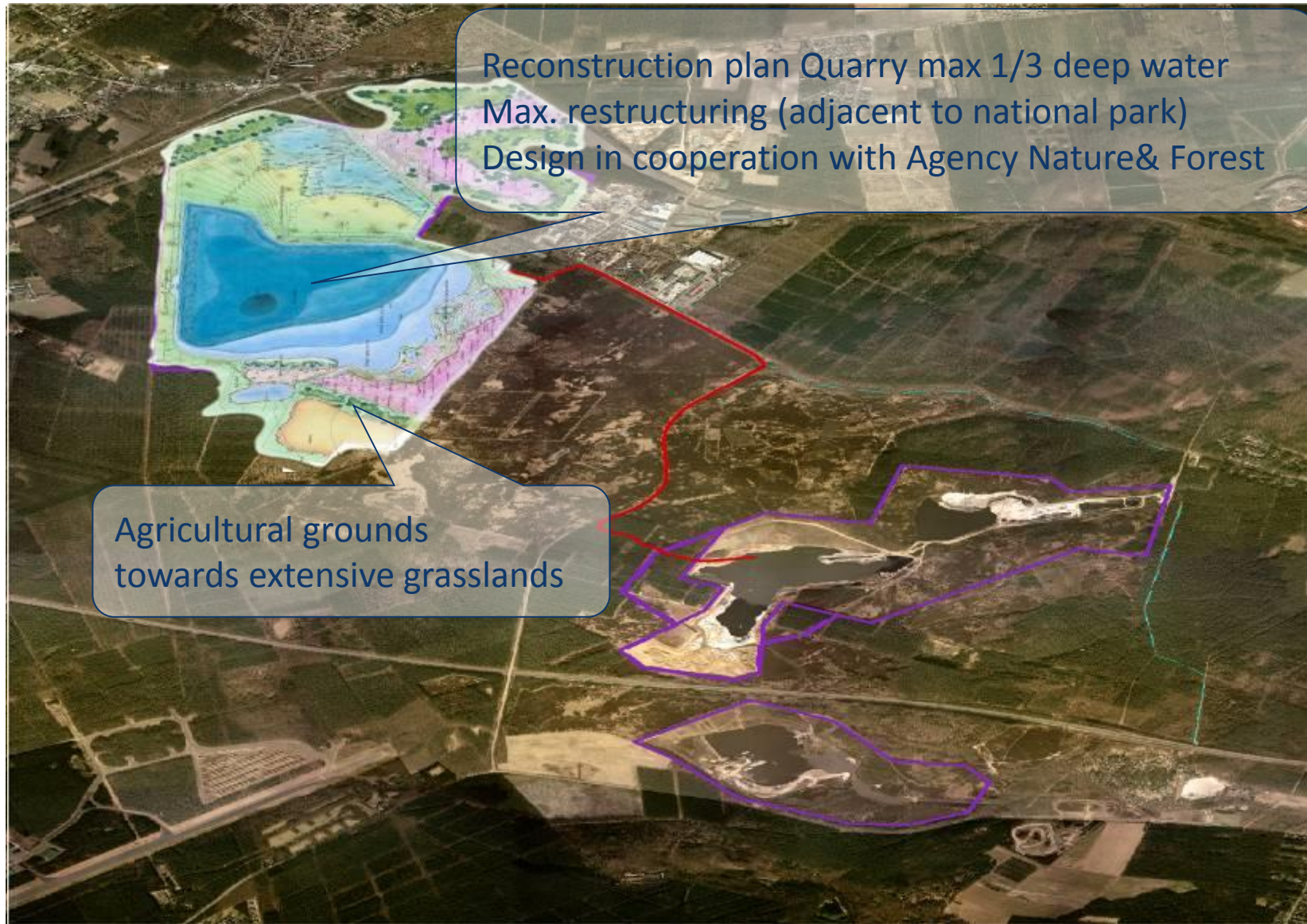
Integration in
“gate” function
National Park:
2011 project

Mining following 5 pilars:

- 1 Prevention and minimizing effects: mining integration
- 2 Rest effects : compensation
- 3 When restructuring : building new habitats and living areas for species (art. 6.1 Habitat Directive)
- 4 In continuous open communication with all parties concerned
- 5 Community platform: civilian, recreant, ...



Maasmechelen: Example Quarry MHZ



Maasmechelen: enhance biodiversity

- Ecological reconstruction of quarries
- Development of new living habitats for endangered species
- Expanding recreational opportunities National Park



Natterjack toad



Moorfrog



Palmate newt



Reed bunting



Nightjar



Silver-studded blue



Woodlark



Smooth snake



Large gold grasshopper

Quarry MHZ & “standstill principle”

- Monitoring study done by Mico-effect in 2014 as a follow-up of the EIA of 2005
 - In consultation with ANB, Sibelco and grit companies

→ Result: table to agree on good management criteria = *‘beheersafsprakentabel’* (a dynamic process)



Dynamische beheersafsprakentabel

- Development of a nature management plan
 - Temporary nature (before exploitation)
 - Permanent nature (after exploitation)→ In cooperation with ANB
- Removal of spontaneous afforestation (re-opening the landscape)
- Selective removal trees
- Target species: Bluethroat



Temporary Nature zone



Dynamische beheersafsprakentabel

- Future follow-up:
 - Ecological evolution every 5 years
 - Annual consultation with ANB
- Financing of this project:
 - Taken care of by Sibelco
 - Future help
 - Funding projects to optimize the realisations

Summary

- This project is succesfull thanks to the good cooperations with all stakeholders
 - rlkm, gemeente Maasmechelen, the land owners (POM), ANB,...
- Difficulties:
 - Environmental legislation
 - Very strict bird and habitat directives
- Lessons learnt:
 - Communicate the results
 - Look for common interests
 - Create opportunities for mining and nature together

People



People

Positive / constructive attitude



People

Long term continuity



Windmills



Floating Solar Panels

